

Firmware Auto-Updater Installation/Users Guide

Installation/Users Guide
for iSimple Gateway Firmware
Auto-Updater Application

Release Version:

1.0.2.4

Updated:

12/18/2011



In association with:



**iSimple Gateway Firmware Updater
Application Users Guide: 1.0.2.4**

Contents

Introduction:	3
Before You Begin:	4
Step 1: Run/Launch the: <i>iSmplPrimarySetup.exe</i>	5
Step 2: Run/Launch of the Main Installer/Executable	8
If NO Update Is Available:	17
If an Update IS Available (Windows XP Message):	18
If an Update IS Available (Windows 7 Message):	18
Additional Information:	20
Found New Hardware:	20
Hardware Installation:	20
If Errors Occurred:	23

Introduction:

Welcome to the all new iSimple Gateway Firmware Auto-Updater. This guide was designed to quickly enable you to install and update the firmware on your iSimple Gateway. The application/updater is self-actuating and for the most part is 'self-healing' in the event of errors.

Please follow the steps below in an orderly fashion and your iSimple Gateway will be up to date before you know it!



Before You Begin:

Please note the important messages below prior to beginning the update process.

Important Note #1:

Please Do Not Connect The iSimple Gateway to the computer until requested to do so.

Important Note #2:

Prior to connecting the iSimple Gateway to the computer – please ensure that the Gateway's DIP switches on the side of the Gateway are all in the Down Position. See figure 1 below.

Figure 1: DIP Switches in the Down Position:

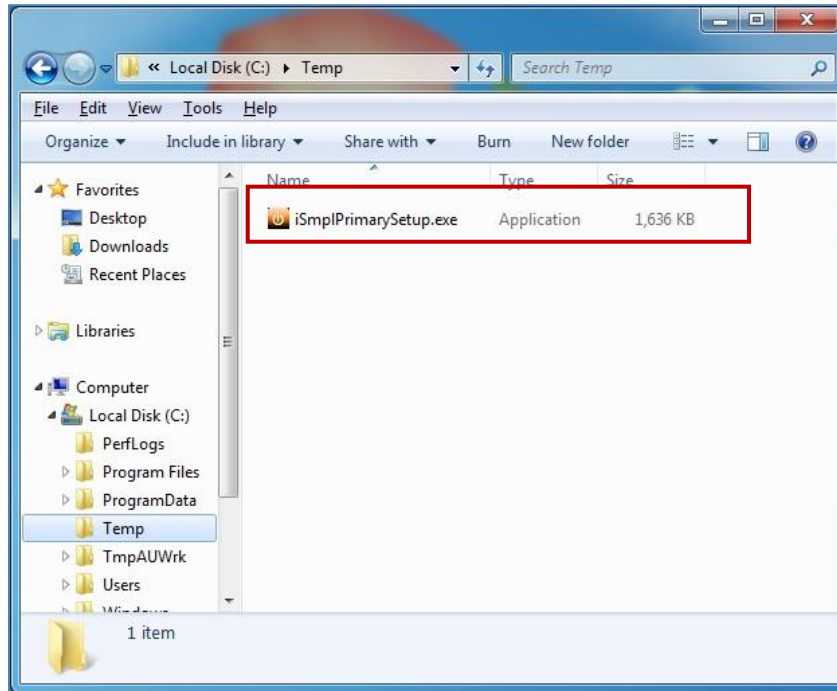


Important Note #3:

You may be asked to Connect/Disconnect the Gateway from the computer during the update process. Please be sure to always re-connect the Gateway to the **Same USB Port** each time.

Step I: Run/Launch the: *iSmplPrimarySetup.exe*

Double-Click on the “**iSmplPrimarySetup.exe**” to Launch the Updater:



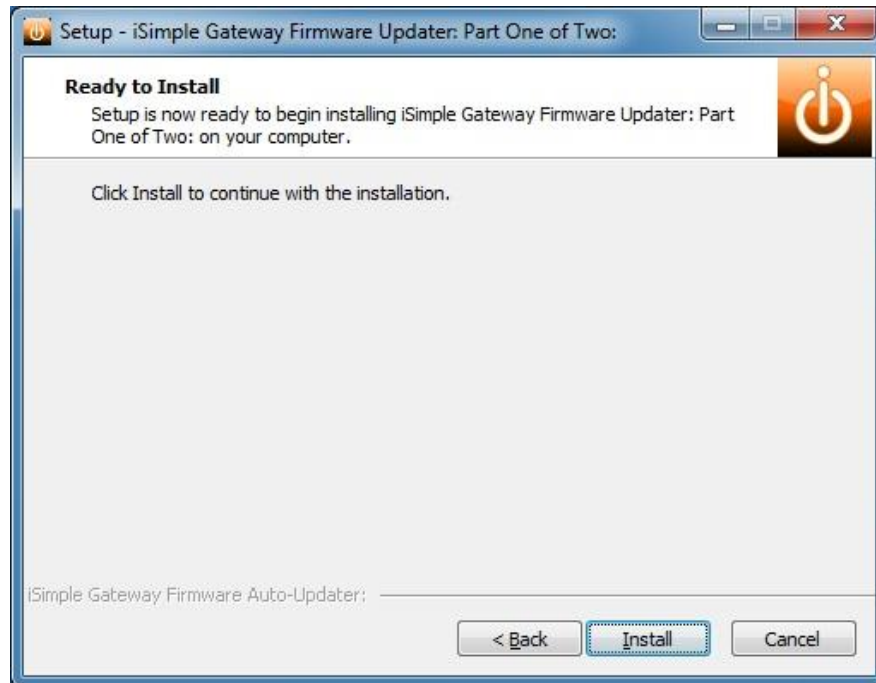
You will be presented with a new screen that will look similar to the following screenshot:



Select the **Next** Button to move to the next screen.



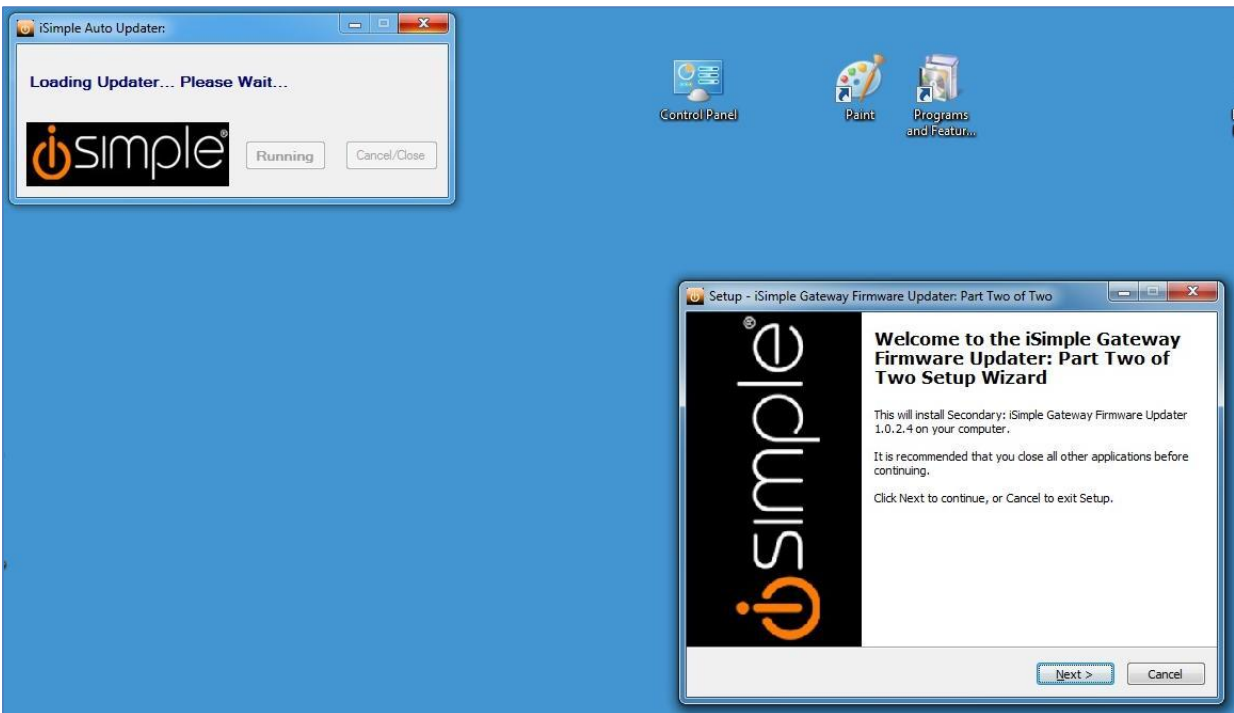
Read And **Accept** the License Agreement.
Select the **Next** Button to move to the next screen.



Select the **Install** Button to move to the next screen.

Firmware Auto Updater User's Guide: For Application Release 1.0.2.4

Selecting the Install button will unpack the needed files required by the Auto-Updater process. When successfully installed, the application will start and you will be presented with the following screens:



Please follow the on-screen instructions in the following pages to complete the Auto-Updater Process.

Step 2: Run/Launch of the Main Installer/Executable.

A moment after the install finishes, you will see the following two screens appear on your desktop:

Application Screen:



The above screen is the Main/Parent Application.

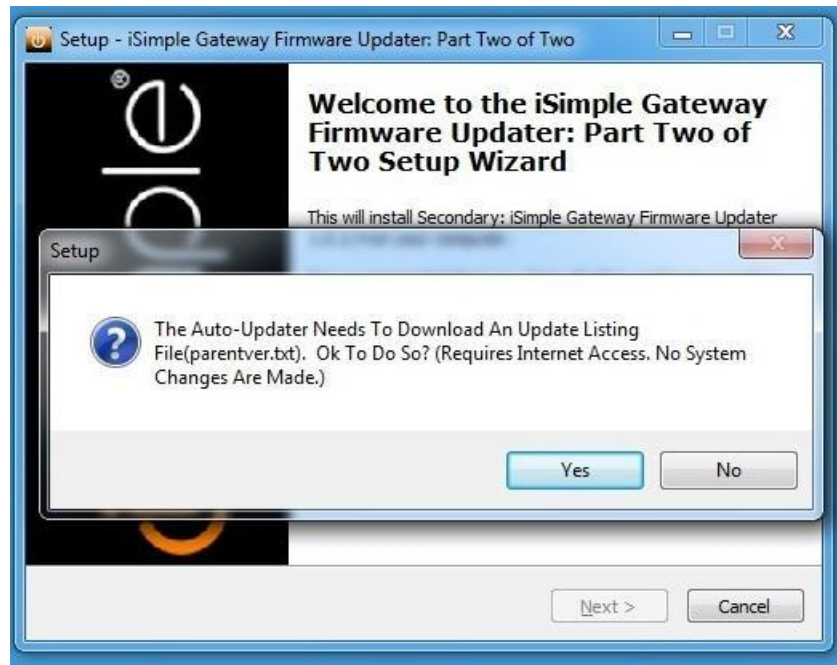
The below screen is the secondary, child application launched by the Main/Parent Application.



Select **Next** to continue.

Firmware Auto Updater User's Guide: For Application Release 1.0.2.4

When you select **Next** you will see a pop-up message requesting permission to download a needed vehicle inventory text file.



Select **Yes** to continue.

(Please Note: This is a read-only text file only and does not send any information of any kind.)

Your window may also look similar to the below:

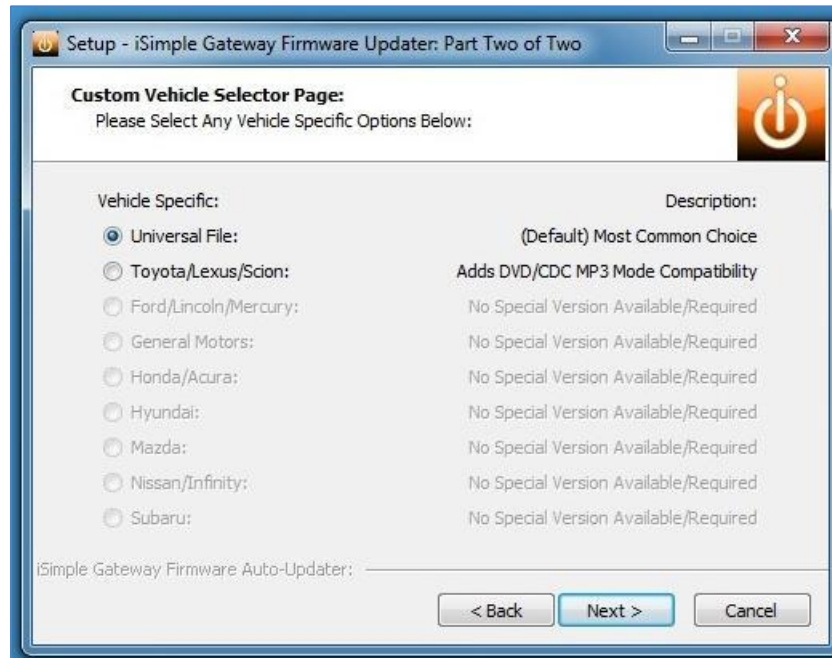


Select **Yes** to continue.

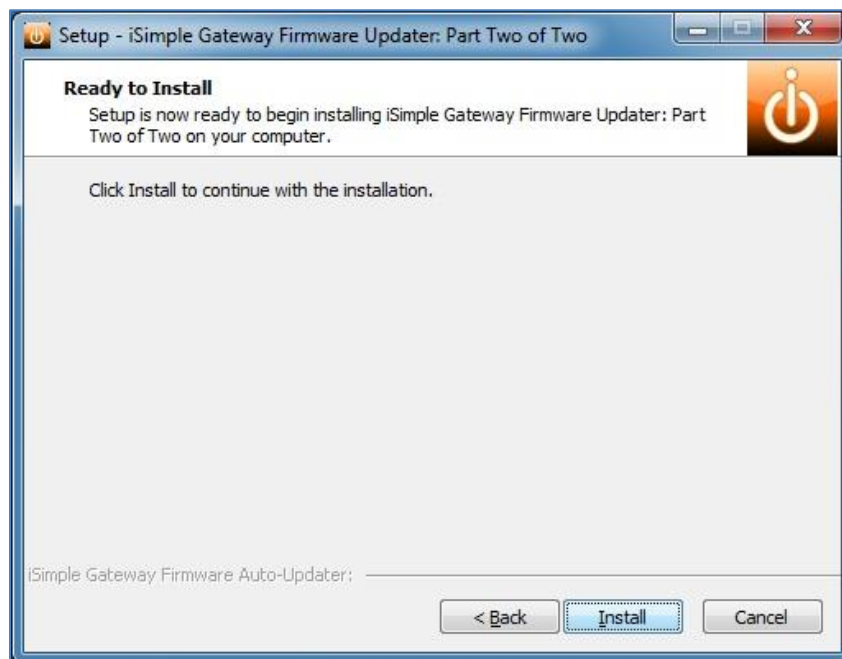
(Please Note: Selecting No will stop the installation and result in "No Changes Made" outcome.)

Firmware Auto Updater User's Guide: For Application Release 1.0.2.4

When the text file is downloaded, the currently available versions and vehicle specific version information is read and displayed in Radio Button format.
If your vehicle applies to any of the other available vehicles and descriptions, please select that Radio Button, or simply keep the default value of **“Universal File”**.



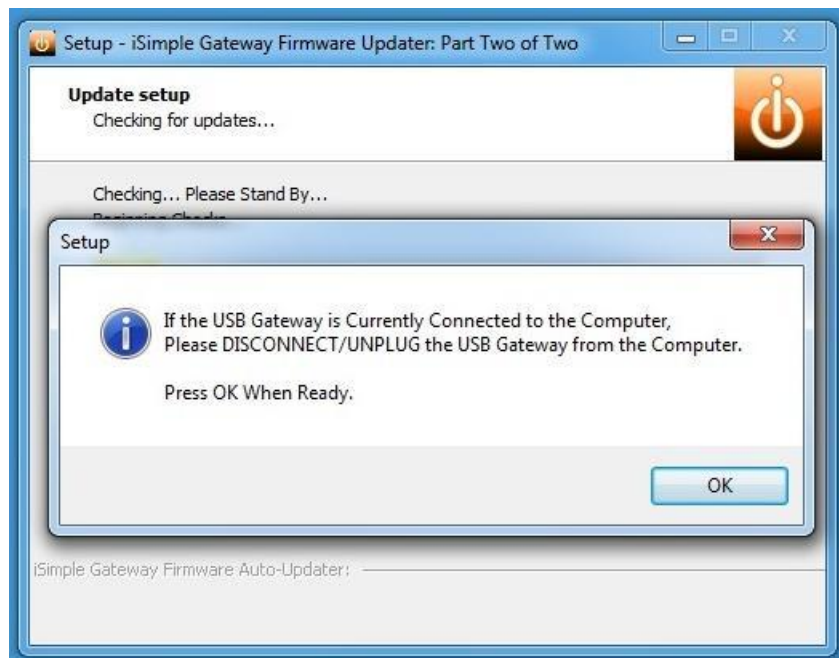
Select **Next** to continue.



Select **Install** to continue.

Firmware Auto Updater User's Guide: For Application Release 1.0.2.4

The Installation will continue and when completed will present you with the following message:



Please Note: In the above image: If the iSimple Gateway is currently plugged into your laptop, please disconnect it at the USB computer port.

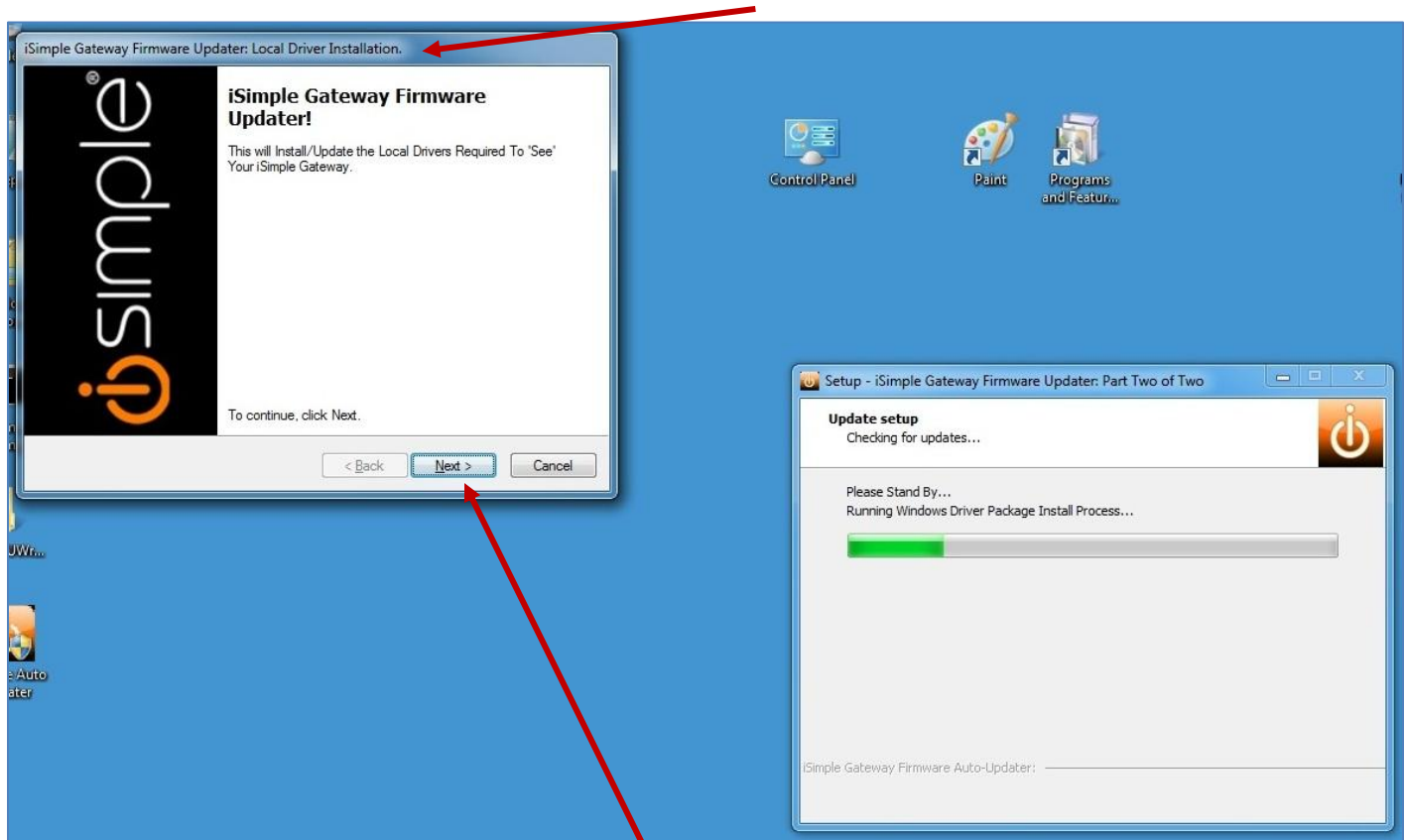
Select **OK** to continue.

Firmware Auto Updater User's Guide: For Application Release 1.0.2.4

The application will continue with the initial configuration and install any missing drivers for the iSimple Gateway.

You will see a new window appear on the desktop entitled:

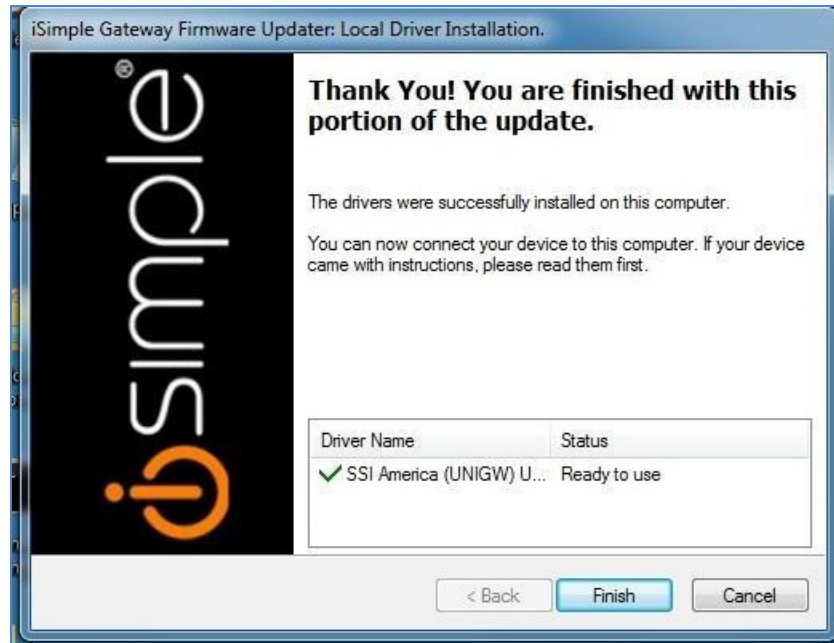
“iSimple Gateway Firmware Updater: Local Driver Installation”



Select **Next** to continue.

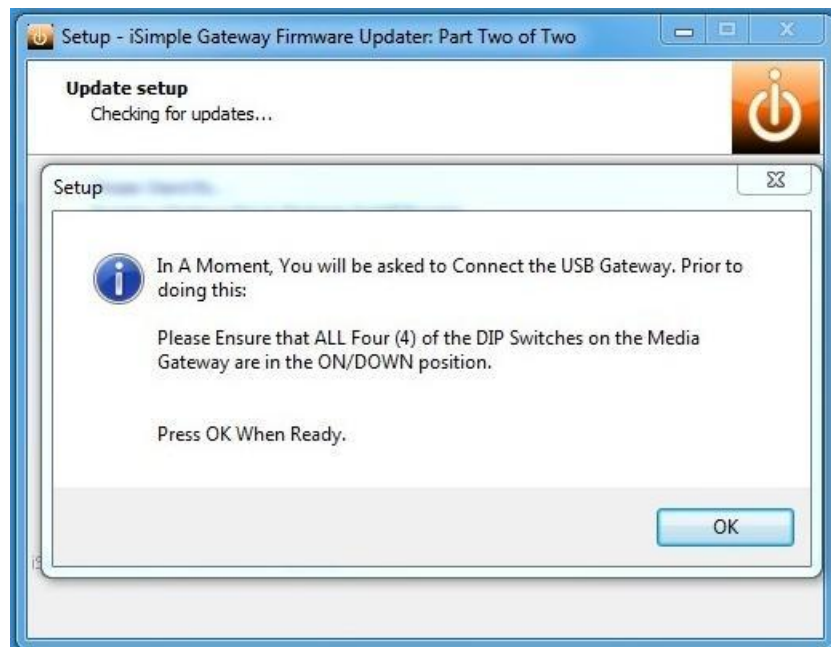
Firmware Auto Updater User's Guide: For Application Release 1.0.2.4

Upon successful completion of the local Driver install/update, you will see the following confirmation message from the Local Driver Installation window.



Select **Finish** to continue

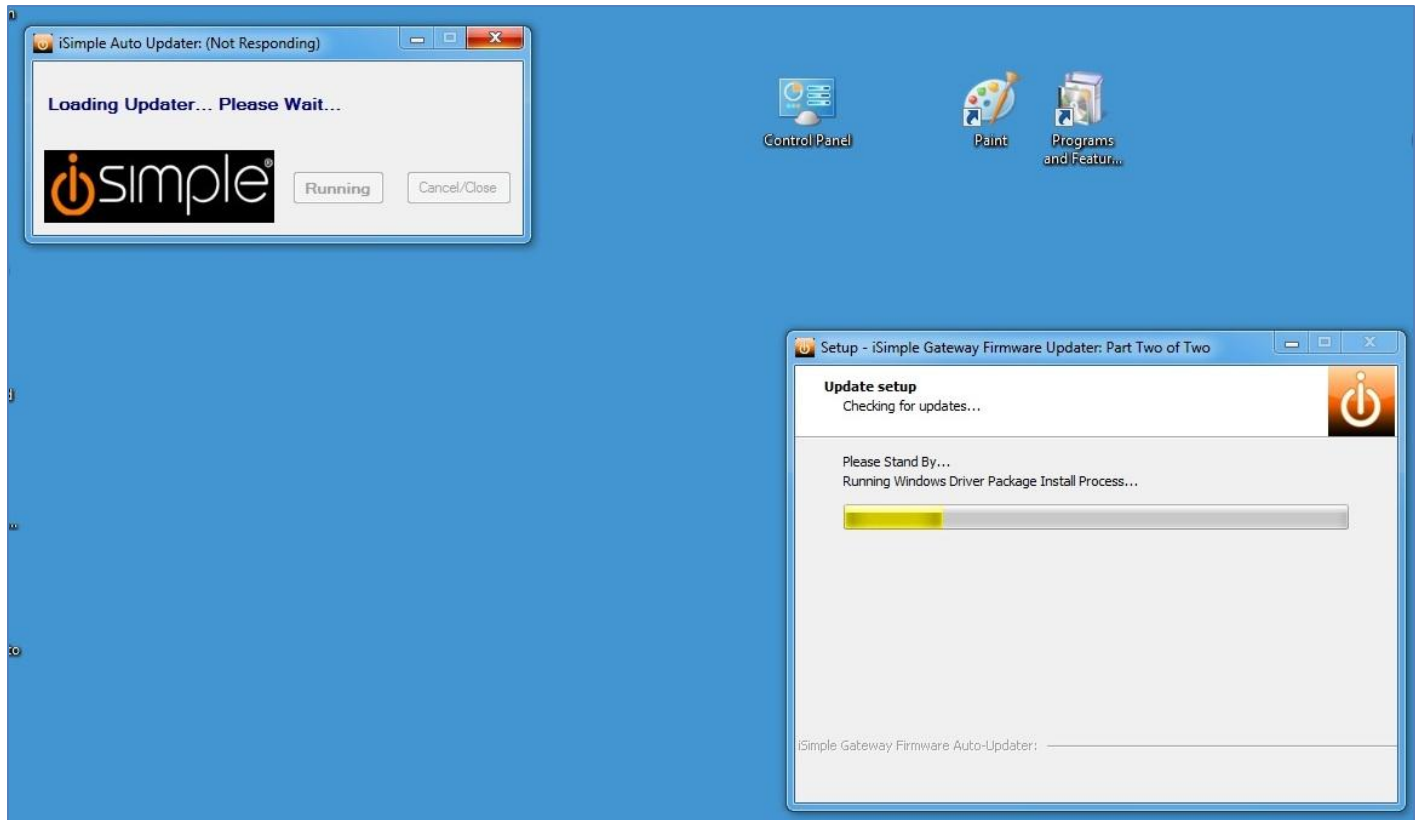
You will next see a new message appear: This message is a reminder to ensure that the DIP switches on the side of the iSimple Gateway are all in the down position.



Select **OK** to continue.

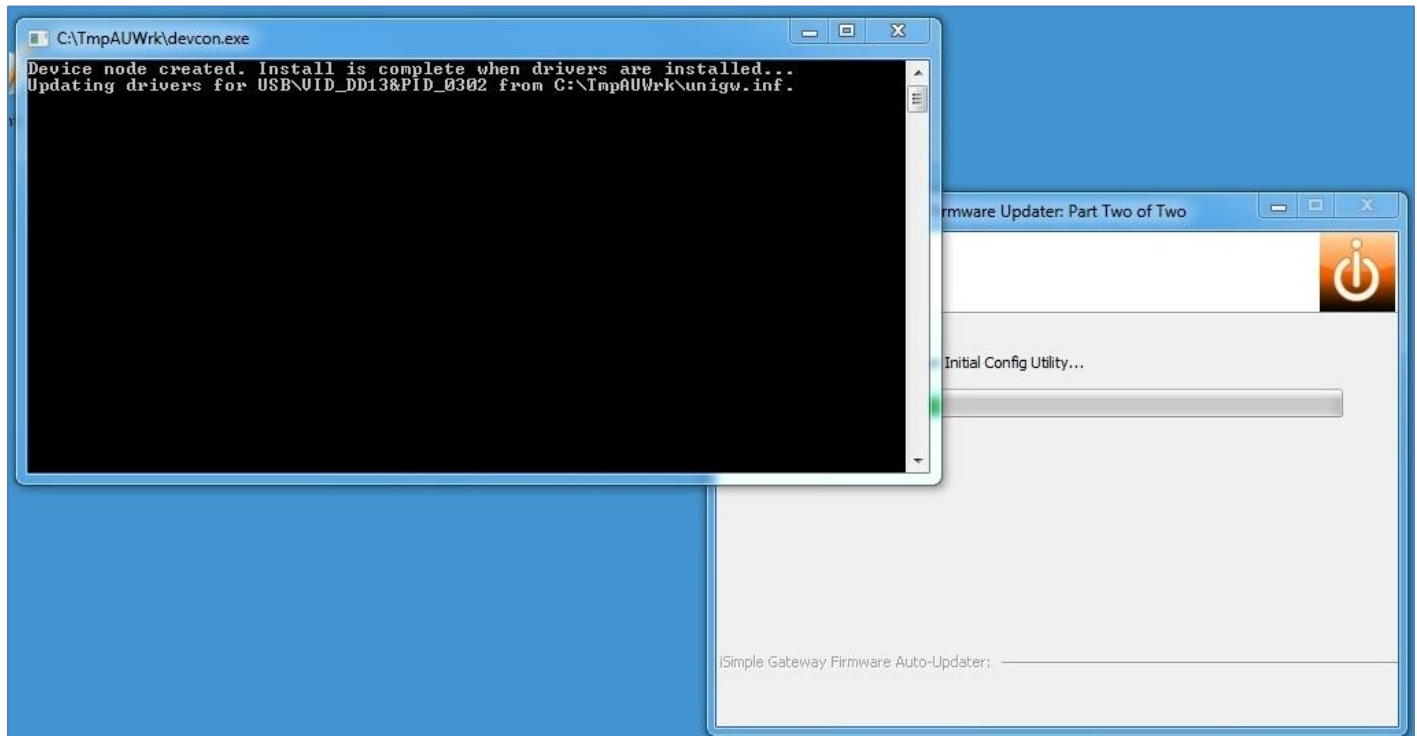
Firmware Auto Updater User's Guide: For Application Release 1.0.2.4

When you select Ok, the application will continue with Driver and Device installation/updates as required depending on the computers Operating System.



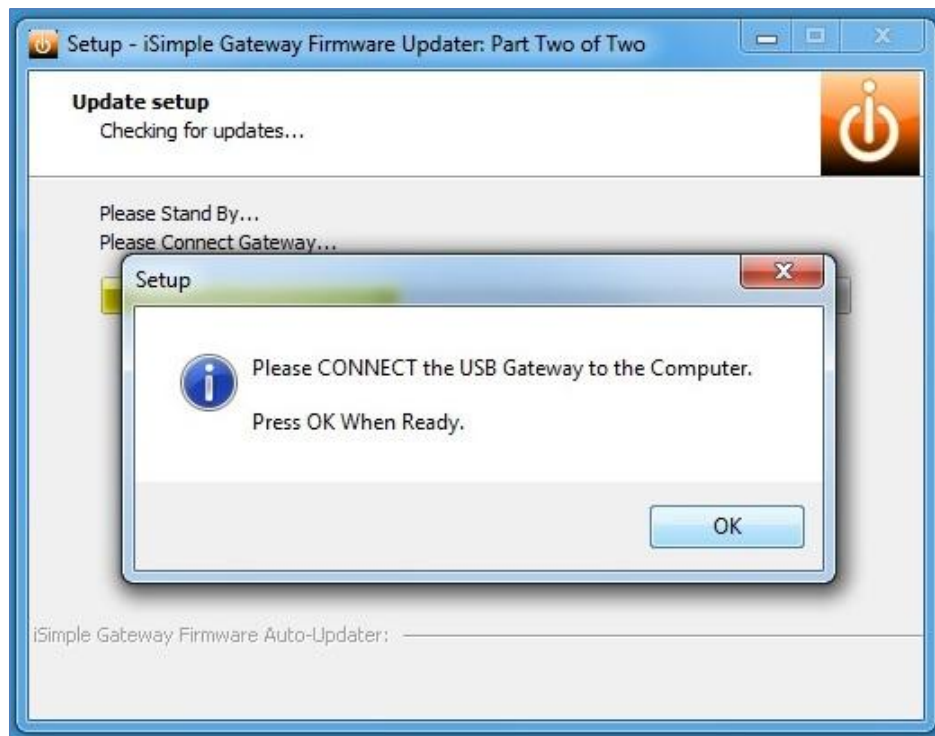
Firmware Auto Updater User's Guide: For Application Release 1.0.2.4

During installation you may see several small windows quickly appear and close – these are local Device Drivers so that Windows is able to understand what the iSimple Gateway is when you plug it into the computer – *when asked to do so.*

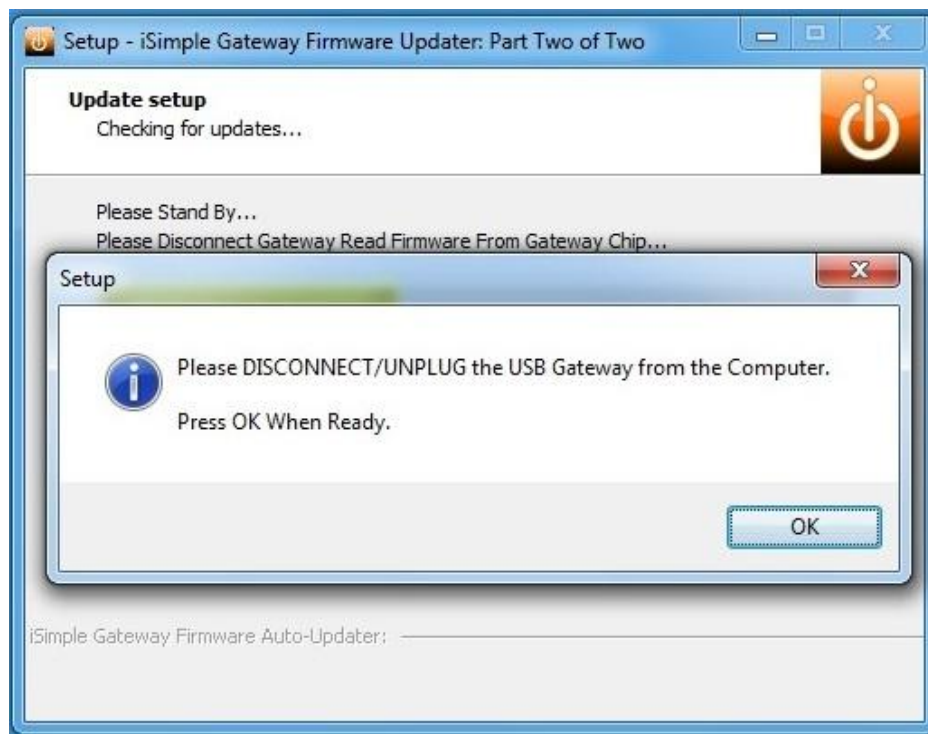


Firmware Auto Updater User's Guide: For Application Release 1.0.2.4

When requested, please connect/plug-in the iSimple Gateway to an available USB Port on your computer.
Select **OK** to continue.

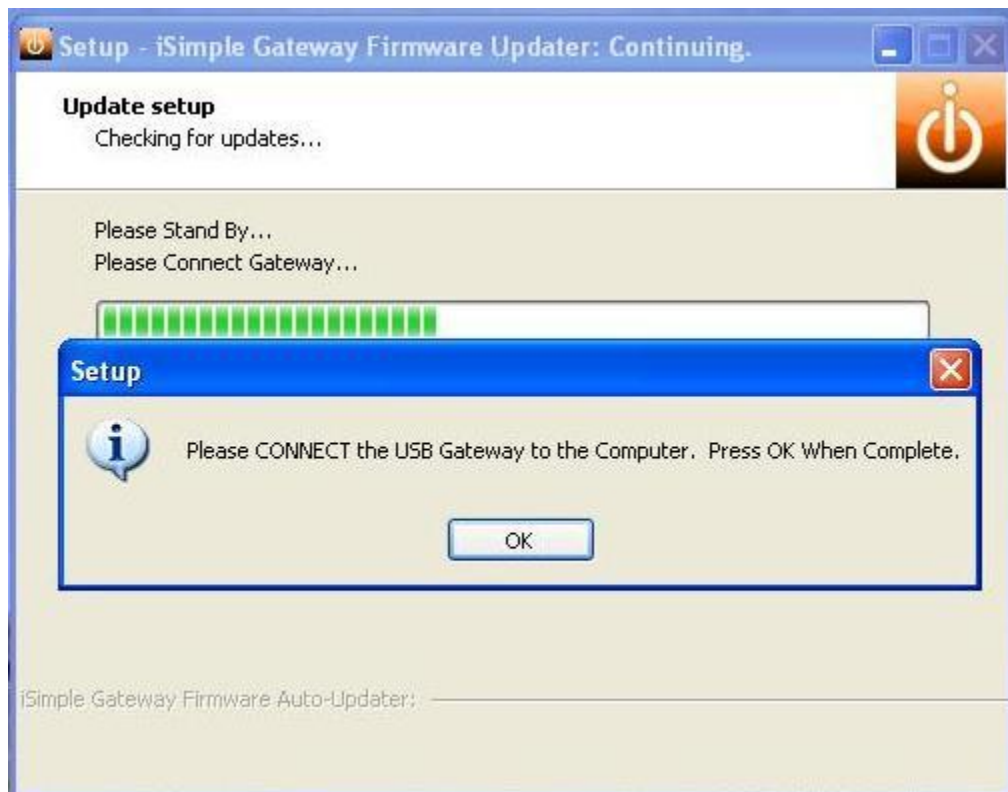


After connecting, you will be asked to Disconnect the Gateway again.
Please do so, and select **OK** to continue.

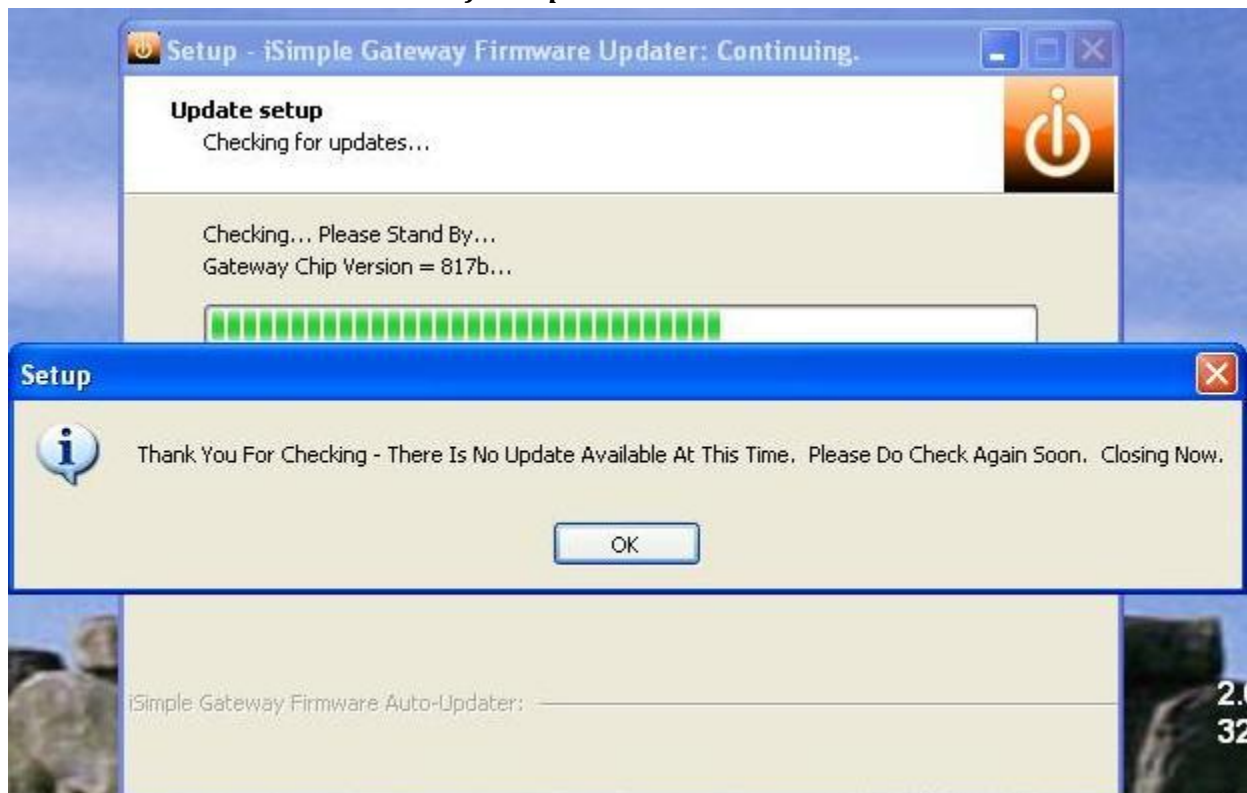


Firmware Auto Updater User's Guide: For Application Release 1.0.2.4

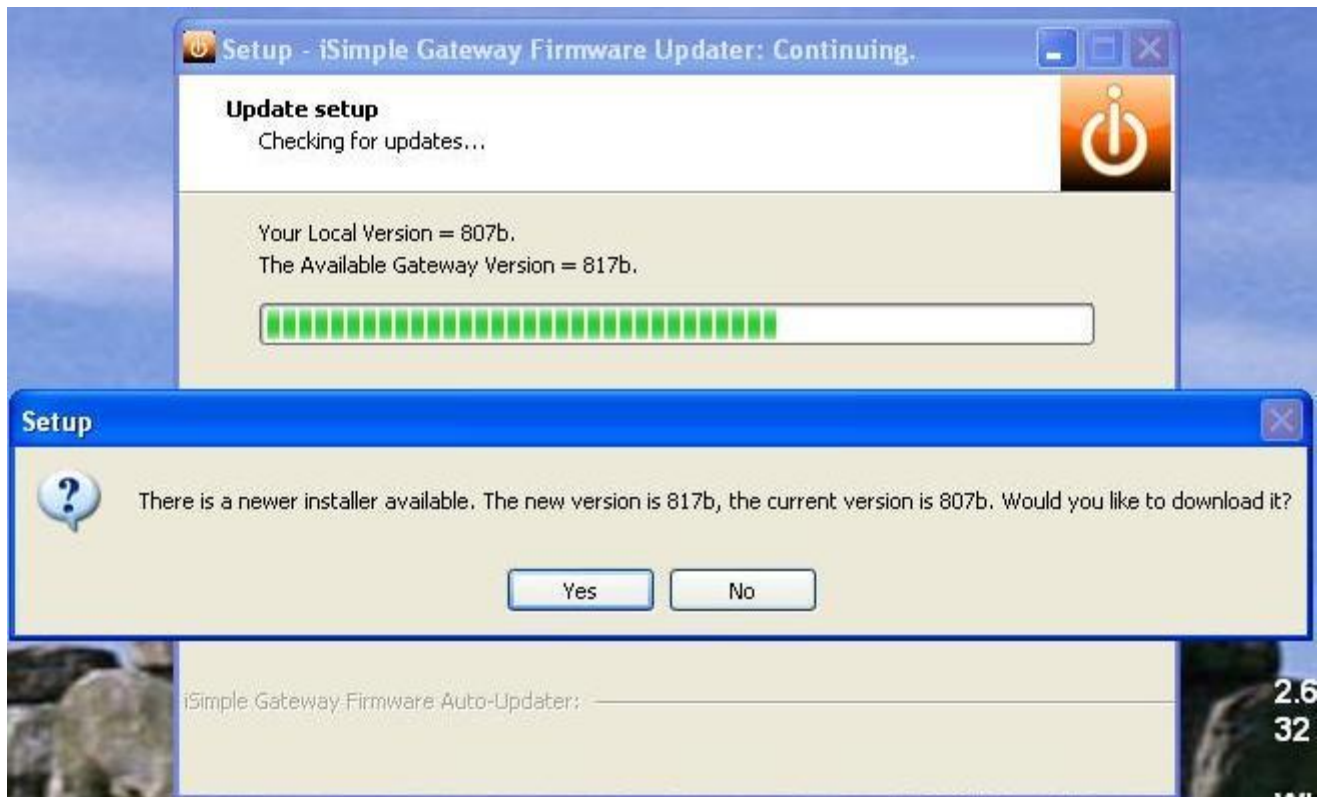
The final step is to reconnect the Gateway the final time.
Please do so and select **OK** to continue.



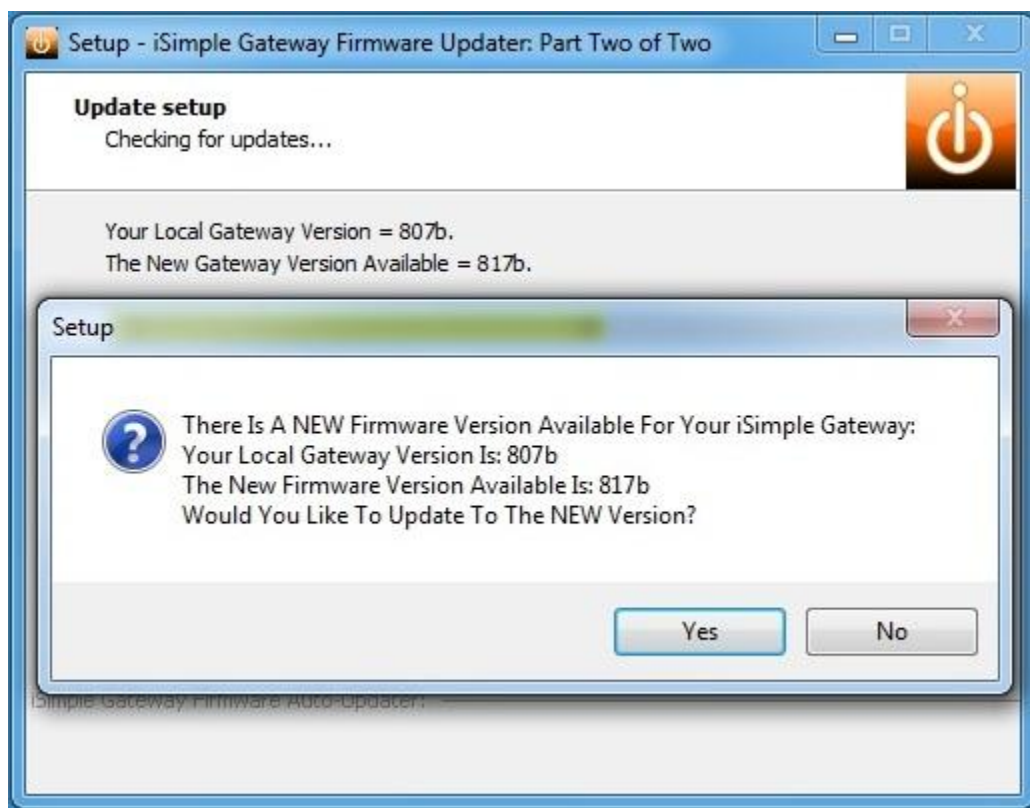
If NO Update Is Available:



If an Update **IS** Available (Windows XP Message):

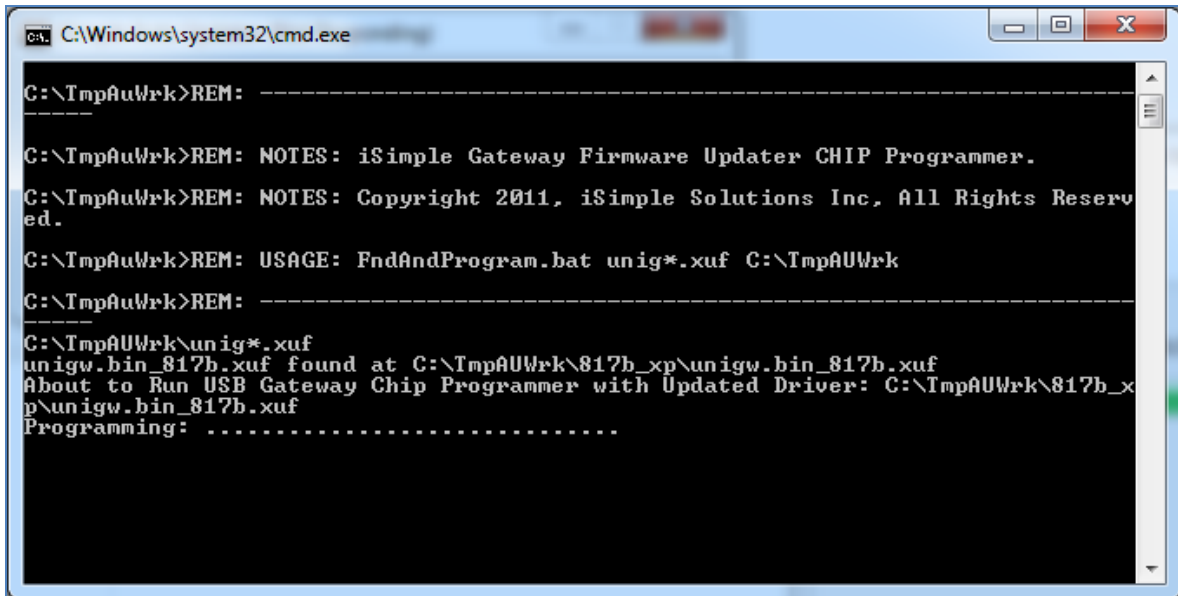


If an Update **IS** Available (Windows 7 Message):



Firmware Auto Updater User's Guide: For Application Release 1.0.2.4

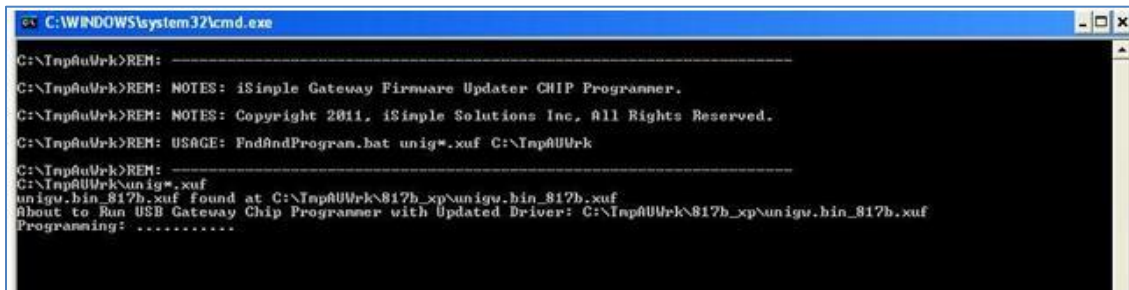
If an update is available, please select the **Yes** button to update your iSimple Gateway.
When you select **Yes**, you will see an additional window appear that will look similar to the below:



```
C:\Windows\system32\cmd.exe

C:\TmpAUWrk>REM: -----
C:\TmpAUWrk>REM: NOTES: iSimple Gateway Firmware Updater CHIP Programmer.
C:\TmpAUWrk>REM: NOTES: Copyright 2011, iSimple Solutions Inc, All Rights Reserved.
C:\TmpAUWrk>REM: USAGE: FndAndProgram.bat unig*.xuf C:\TmpAUWrk
C:\TmpAUWrk>REM: -----
C:\TmpAUWrk\unig*.xuf
unigw.bin_817b.xuf found at C:\TmpAUWrk\817b_xp\unigw.bin_817b.xuf
About to Run USB Gateway Chip Programmer with Updated Driver: C:\TmpAUWrk\817b_xp\unigw.bin_817b.xuf
Programming: .....
```

Another example may look like:



```
C:\WINDOWS\system32\cmd.exe

C:\TmpAUWrk>REM: -----
C:\TmpAUWrk>REM: NOTES: iSimple Gateway Firmware Updater CHIP Programmer.
C:\TmpAUWrk>REM: NOTES: Copyright 2011, iSimple Solutions Inc, All Rights Reserved.
C:\TmpAUWrk>REM: USAGE: FndAndProgram.bat unig*.xuf C:\TmpAUWrk
C:\TmpAUWrk>REM: -----
C:\TmpAUWrk\unig*.xuf
unigw.bin_817b.xuf found at C:\TmpAUWrk\817b_xp\unigw.bin_817b.xuf
About to Run USB Gateway Chip Programmer with Updated Driver: C:\TmpAUWrk\817b_xp\unigw.bin_817b.xuf
Programming: .....
```

When the dots that appear next to the “**Programming: ...**” stops, this window will close, the window you have been working with will close and you will see the results of the update process:

A succesful update will display the following message:



Additional Information:

During this installation, you will see several small windows/applications flash on your desktop – This is normal and expected.

Found New Hardware:

If you see the “Found New Hardware” Window appear: (Regardless of your Operating System)

You Must Close the “Found New Hardware Wizard” for the application to run properly.



You must close the “Found New Hardware Wizard” for the Gateway Update to run properly.

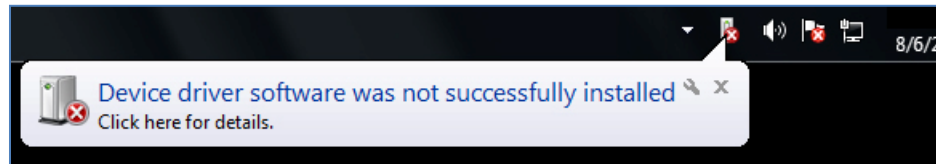
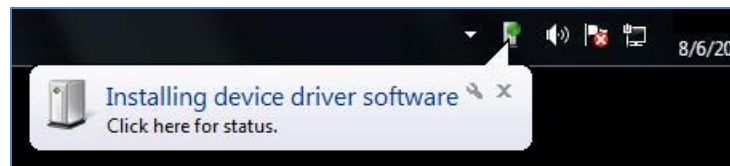
Explanation: (Optional Reading):

The reason for closing the “**Found New Hardware Wizard**” is that this application will programmatically mimic many of the manual steps involved with adding a new/updated device. Therefore, if the Hardware Wizard remains open while the auto-updater is attempting to communicate with the device, there will be contention and update will fail.

Hardware Installation:

Please Note: Depending on your Operating System (Windows XP/Win 7/NT) you may see the following pop-ups occur. If you see any of the below pop-ups during installation, this is normal and expected depending on your level of security and your current operating system.

Depending on the Gateway device owned and previous activities or installations, you may or may not see the following two small pop-ups on the lower right hand corner of your screen when you initially plug in the Gateway.

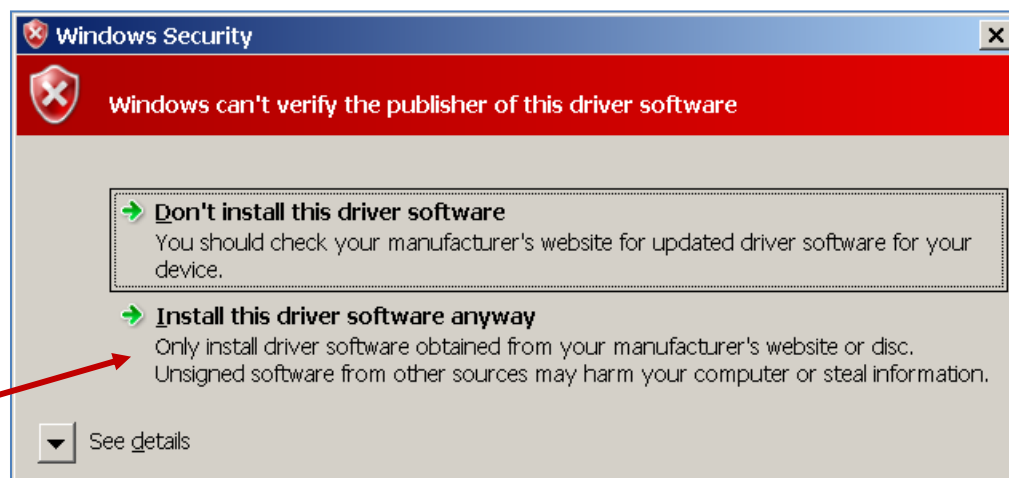


Please Select **“Continue Anyway”** or **“Install this driver software anyway”** for any of these messages that may appear during the Gateway application’s update process.

If you see any of the following messages while the Auto-Updater Application is running, please choose the following reply to the questions:



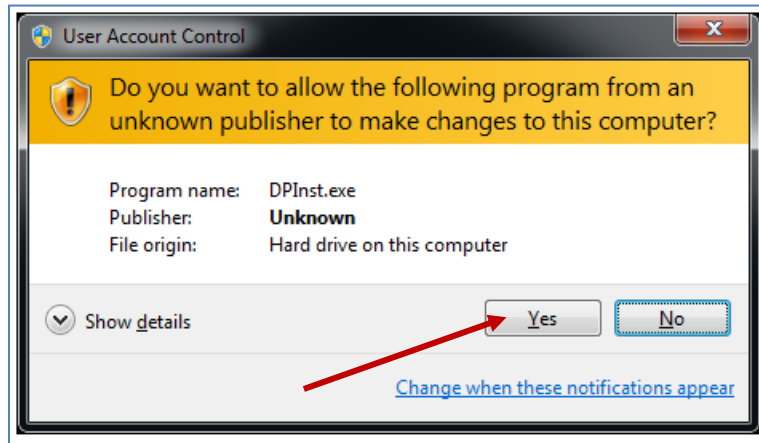
Or
“Continue Anyway”



Or

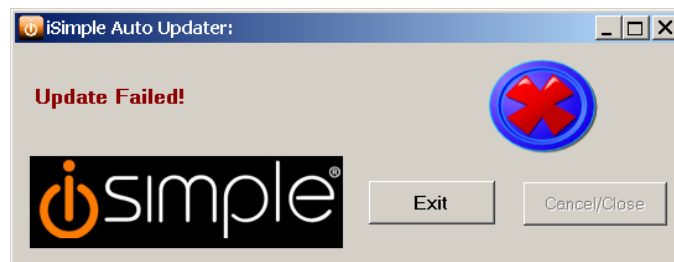
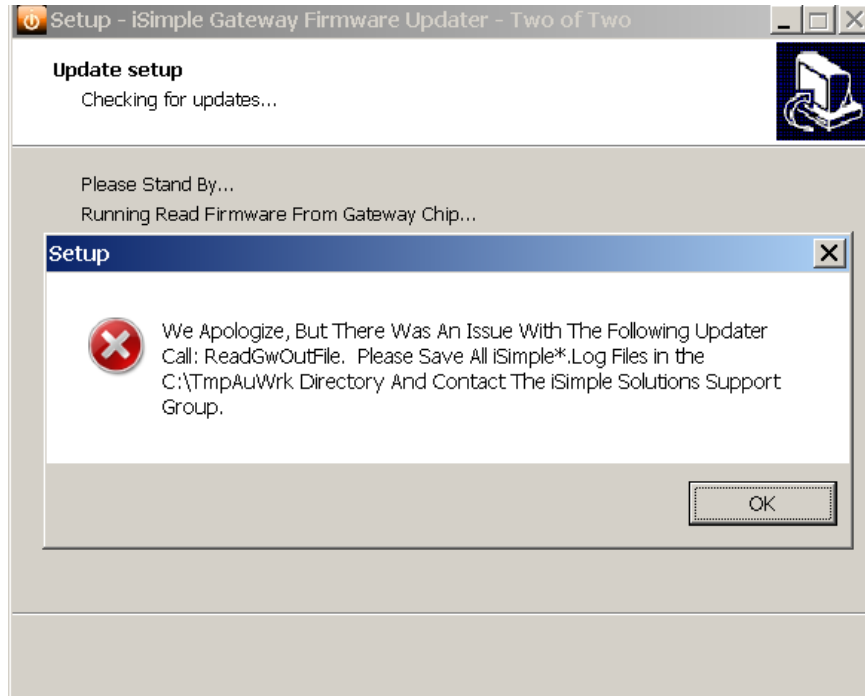
“Install this Driver Software anyway”

For Windows 7 and above Installations, you may see the following message:



Or
“Yes”

If Errors Occurred:

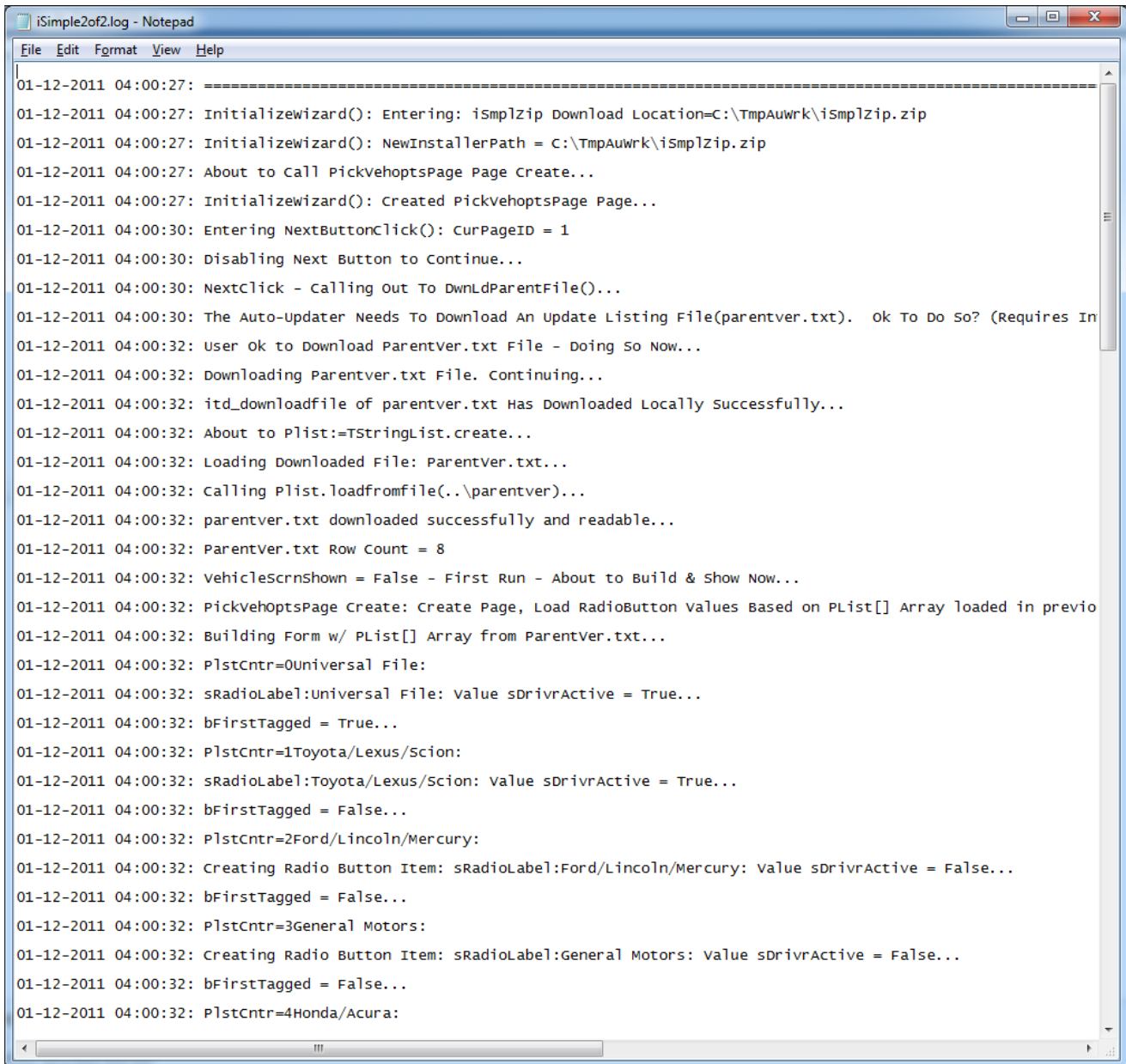


If any errors were encountered that the installer was not able to work around, the installation may fail. In that case, you will be presented with the above message.

If this happens, please contact **iSimple Support** and be prepared to read, or email, the following file to them:

<C:\TmpAuWrk\iSimple2of2-1024.log>.

An example of a typical log file is show below:



```
iSimple2of2.log - Notepad
File Edit Format View Help
01-12-2011 04:00:27: =====
01-12-2011 04:00:27: Initializewizard(): Entering: ismplZip Download Location=C:\TmpAuwrk\ismplZip.zip
01-12-2011 04:00:27: Initializewizard(): NewInstallerPath = C:\TmpAuwrk\ismplZip.zip
01-12-2011 04:00:27: About to Call PickvehoptsPage Page Create...
01-12-2011 04:00:27: Initializewizard(): Created PickvehoptsPage Page...
01-12-2011 04:00:30: Entering NextButtonClick(): CurPageID = 1
01-12-2011 04:00:30: Disabling Next Button to Continue...
01-12-2011 04:00:30: NextClick - Calling out To DwnLdParentFile()...
01-12-2011 04:00:30: The Auto-Updater Needs To Download An update Listing File(parentver.txt).  Ok To Do So? (Requires In
01-12-2011 04:00:32: User ok to Download Parentver.txt File - Doing So Now...
01-12-2011 04:00:32: Downloading Parentver.txt File. Continuing...
01-12-2011 04:00:32: itd_downloadfile of parentver.txt Has Downloaded Locally Successfully...
01-12-2011 04:00:32: About to Plist:=TStringList.create...
01-12-2011 04:00:32: Loading Downloaded File: Parentver.txt...
01-12-2011 04:00:32: Calling Plist.loadfromfile(..\parentver)...
01-12-2011 04:00:32: parentver.txt downloaded successfully and readable...
01-12-2011 04:00:32: Parentver.txt Row Count = 8
01-12-2011 04:00:32: VehicleScrnShown = False - First Run - About to Build & show Now...
01-12-2011 04:00:32: PickvehoptsPage Create: Create Page, Load RadioButton Values Based on PList[] Array loaded in previo
01-12-2011 04:00:32: Building Form w/ PList[] Array from ParentVer.txt...
01-12-2011 04:00:32: PlstCntr=0Universal File:
01-12-2011 04:00:32: sRadioLabel:Universal File: value sDrivrActive = True...
01-12-2011 04:00:32: bFirstTagged = True...
01-12-2011 04:00:32: PlstCntr=1Toyota/Lexus/Scion:
01-12-2011 04:00:32: sRadioLabel:Toyota/Lexus/Scion: Value sDrivrActive = True...
01-12-2011 04:00:32: bFirstTagged = False...
01-12-2011 04:00:32: PlstCntr=2Ford/Lincoln/Mercury:
01-12-2011 04:00:32: Creating Radio Button Item: sRadioLabel:Ford/Lincoln/Mercury: value sDrivrActive = False...
01-12-2011 04:00:32: bFirstTagged = False...
01-12-2011 04:00:32: PlstCntr=3General Motors:
01-12-2011 04:00:32: Creating Radio Button Item: sRadioLabel:General Motors: value sDrivrActive = False...
01-12-2011 04:00:32: bFirstTagged = False...
01-12-2011 04:00:32: PlstCntr=4Honda/Acura:
```


© 2011 iSimple Solutions/AAMP of America, Inc.
ALL RIGHTS RESERVED.

This guide contains proprietary information protected by copyright. The software described in this guide is furnished under a software license or nondisclosure agreement. This software may be used or copied only in accordance with the terms of the applicable agreement. No part of this guide may be reproduced or transmitted in any form or by any means, electronic or mechanical, including photocopying and recording for any purpose other than the purchaser's personal use without the written permission of iSimple Solutions/AAMP of America, Inc.

The information in this document is provided in connection with iSimple Solutions/AAMP of America, Inc products. No license, express or implied, by estoppel or otherwise, to any intellectual property right is granted by this document or in connection with the sale of iSimple Solutions/AAMP of America, Inc products. EXCEPT AS SET FORTH IN iSimple Solutions/AAMP of America, Inc TERMS AND CONDITIONS AS SPECIFIED IN THE LICENSE AGREEMENT FOR THIS PRODUCT, iSimple Solutions/AAMP of America, Inc ASSUMES NO LIABILITY WHATSOEVER AND DISCLAIMS ANY EXPRESS, IMPLIED OR STATUTORY WARRANTY RELATING TO ITS PRODUCTS INCLUDING, BUT NOT LIMITED TO, THE IMPLIED WARRANTY OF MERCHANTABILITY, FITNESS FOR A PARTICULAR PURPOSE, OR NON-INFRINGEMENT. IN NO EVENT SHALL iSimple Solutions/AAMP of America, Inc BE LIABLE FOR ANY DIRECT, INDIRECT, CONSEQUENTIAL, PUNITIVE, SPECIAL OR INCIDENTAL DAMAGES (INCLUDING, WITHOUT LIMITATION, DAMAGES FOR LOSS OF PROFITS, BUSINESS INTERRUPTION OR LOSS OF INFORMATION) ARISING OUT OF THE USE OR INABILITY TO USE THIS DOCUMENT, EVEN IF iSimple Solutions/AAMP of America, Inc HAS BEEN ADVISED OF THE POSSIBILITY OF SUCH DAMAGES. iSimple Solutions/AAMP of America, Inc makes no representations or warranties with respect to the accuracy or completeness of the contents of this document and reserves the right to make changes to specifications and product descriptions at any time without notice. iSimple Solutions/AAMP of America, Inc does not make any commitment to update the information contained in this document.

If you have any questions regarding your potential use of this material, contact:

iSimple Solutions/AAMP of America, Inc.

LEGAL Dept

13160 56th Ct # 502

Clearwater, FL 33760-4008

Refer to our web site (www.aampofamerica.com) for regional and international office information.

Trademarks

iSimple Solutions, AAMP, AAMP of America, Inc., the iSimple Software logo are trademarks and registered trademarks of iSimple Solutions/AAMP of America, Inc in the United States of America and other countries. Other trademarks and registered trademarks used in this guide are property of their respective owners.